

**ACTIVE SAFETY**

SAFER • LESS EXPENSIVE • SUSTAINABLE

**USA 800.657.6324**

**www.activesafety.com**

Project:

Arch:

Catalog #:

Date:

## Series 2002

Photoluminescent Exit Sign • High & Low Level • UL924 Listed

### Specification Features

Viewing Distance:	75 feet
Operating Life:	25+ years
Activation:	5 foot-candles of <b>LED</b> or fluorescent lighting.
Face plate:	Heavy duty aluminum stenciled face. Optional (non UL) polycarbonate shield.
Face Plate Colors:	Black, white, aluminum and custom colors.
Letter Color:	Green Illuminating. Red outline on white and aluminum signs.
Directional:	Pop-out chevron arrows with standard sign. <b>Must specify arrow direction with BE</b>
Mounting:	Wall, flag and ceiling.
Attachments:	Tamper proof metal screws or bracket.
Dimensions:	8" high x 15" wide. 1/4" to 3/8" depth
Features:	Architectural "Die-Cut" Design. Non-electrical, non-radioactive, low profile, explosion proof, Limited lifetime warranty.
Warranty:	Limited lifetime warranty.
Green Attributes:	NO radioactivity. No power usage. No hazardous materials. High percentage of recycled material. Minimal maintenance. Long life. Recyclable.
Listings & Codes:	Listed to UL924. Listed by California State Fire Marshal. IBC, IFC & NFPA and UFC compliant.

#### Active Safety's Series 2002

photoluminescent exit signs are durable, architecturally attractive exit signs specified by leading architects and engineers for hotels, schools, retail, offices, hospitals, parking garages, US military facilities & other locations. Conforms to the IBC, NFPA and UFC codes.

Non-electrical, non-radioactive and with a high content of recycled material, Active Safety Series 2002 photoluminescent exit signs are a favorite with LEED™ and other environmentally focused projects.

Photoluminescent operation means there are no electrical connections to engineer, procure and install. Once located adjacent to artificial lighting, Active Safety Series 2002 photoluminescent exit signs will operate for 25+ years with only minimal maintenance - no lamps, batteries or radioactive tubes to ever replace or dispose of.

### Ordering Format (example: Active Safety 2002 - BE16 - S - WM - A - RA)

SERIES	STYLE	FACES	MOUNTING	FACE PLATE COLOR	ARROWS*
<u>2002</u>	<u>BLANK</u> - standard configuration <u>BE</u> - polycarbonate vandal shield	<u>S</u> - single <u>D</u> - double	<u>WM</u> - wall mount <u>CM</u> - ceiling or flag mount	<u>A</u> - brushed aluminum <u>B</u> - black anodized <u>W</u> - White <u>C</u> - Custom	<u>RA</u> - Right <u>LA</u> - Left  <b>*Specify only with BE</b>

### Specification Description

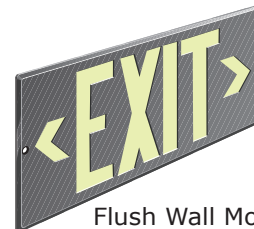
High [or Low Level] Exit Sign. UL 924 listed. Photoluminescent, non-electrical, non-radioactive, 75 foot visibility rating, 25+ year life. Recycled aluminum construction. Die-cut, stenciled faceplate with green symbols and 'pop-out' arrows. Single and double sided face configurations consistent with ceiling, flag or wall mount applications specified on project drawings. Matching bracket for ceiling and flag mount applications. **Active Safety Series 2002.**



Ceiling Mount



© Oct 2016

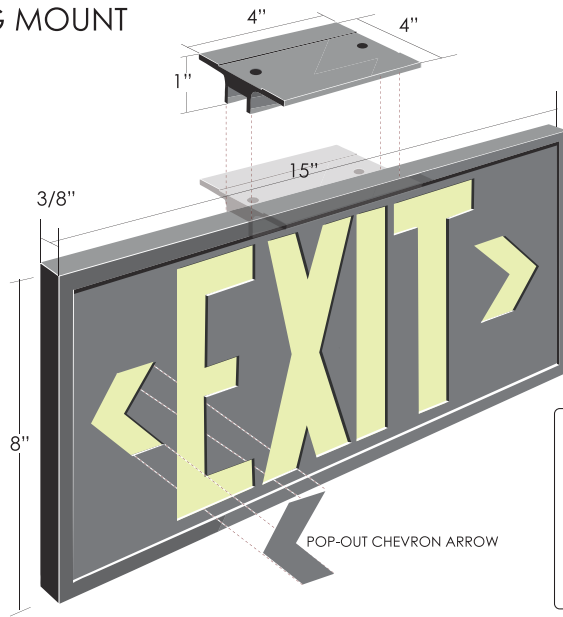


Flush Wall Mount

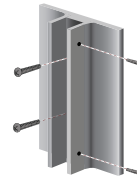
# 2002 Exit Sign

## Product Dimensions and Installation Details

CEILING MOUNT



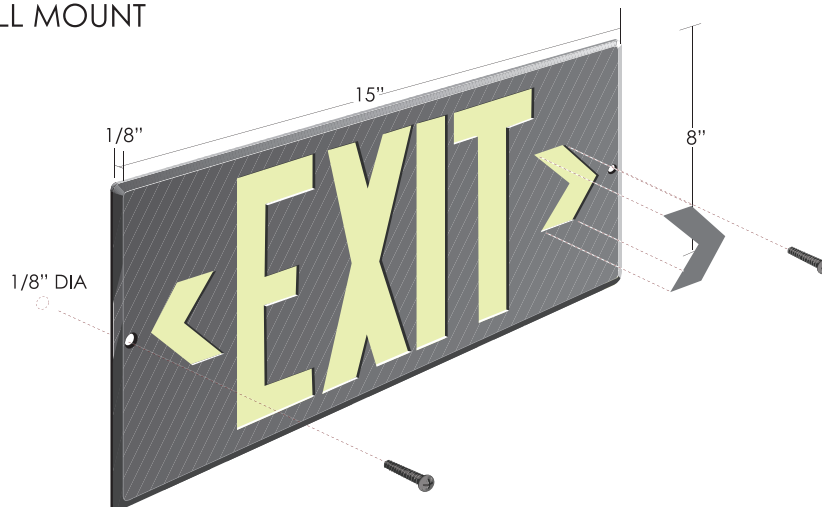
FLAG MOUNT



**NOTES:**

- 1- All dimensions in inches.
- 2- Screws not included to attach bracket to wall/ceiling substrate. Hole size = 1/8".
- 3- Wall mount attachment screws are included. 9/64" diameter x 1 1/2" long.

WALL MOUNT



### Attributes

- Non-electrical and non-radioactive. Activated by nearby light.
- Use instead of LED or Tritium in high and low exit sign locations.
- Durable and attractive 'diecast' design lasts 25+ years. Several faceplate color options.
- Ceiling, wall and flag mounting options. 75 foot viewing distance.
- Easy, quick installation – no electrical circuitry.
- Minimal maintenance – no lamps or batteries to replace.
- "Green", sustainable construction and operation. A favorite with LEED projects.
- UL924 listed. Energy Star listed. IBC, NFPA and US Military compliant. Fire Marshal approved.