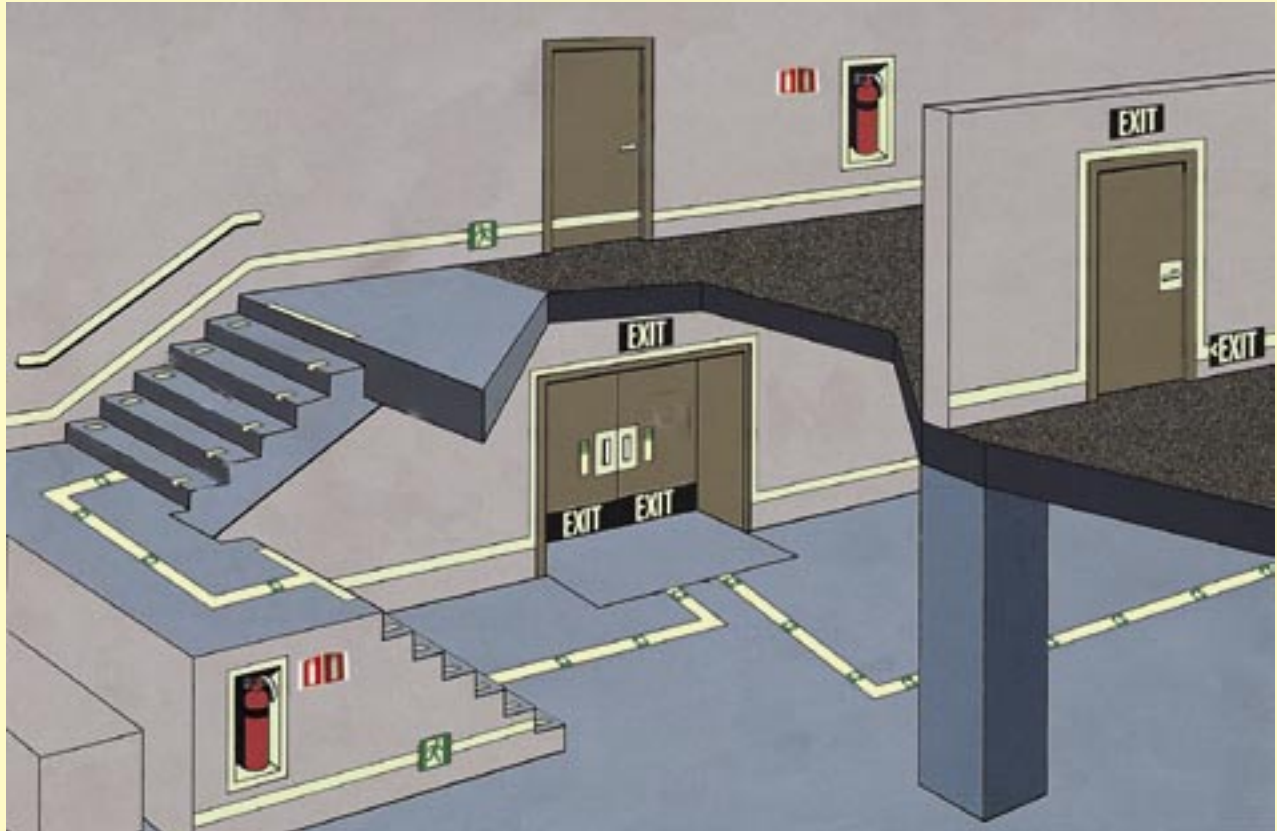


# ACTIVE SAFETY™



Utah 800.657.6324 • California 888.375.9684  
www.activesafety.com



## EMERGENCY ACCESSORIES

### 39.5 Pathway/ Landing Line

39.5" Length x 1" or 2" Width

Part # 39.5 - 2A ( 2" with arrow)

39.5 - 2 ( 2' w/o arrow)

39.5 - 1 (1" w/o arrow)



### DOOR HANDLE

8" h x 2" w

Part # 64865

### STEP TREAD

8" l x 3" w

Part # 64960



### ALARM SIGN

6" h x 10.5" w x 4" d

PART# 84100



### AREA OF RESCUE

6" h x 18" w

PART# 60001



### HOSE SIGN

6" h x 10.5" w x 4" d

PART# 84540



### EXTINGUISHER

6" h x 10.5" w x 4" d

PART# 84520



### ARROW CIRCLE

6" x 6"

Part #60055



### RUNNING MAN 6" x 6"

PART (right) # 0029R

PART (left) #0031L

