

Series 2002

Photo-luminescent Exit Sign

High & Low Level • UL924 Listed • Leed Credit Compliant

Project:
Type:
Catalog #:
By/Date:

SPECIFICATION FEATURES

Viewing Distance: 75 feet
 Operating Life: 25+ years
 Activation: 5 foot-candles of fluorescent lighting.
 Face plate: Heavy duty aluminum stenciled face.
 Optional (non-UL) polycarbonate shield.
 Face Plate Colors: Black, white, aluminum and custom colors.
 Letter Color: Green Illuminating.
 Directional: Pop-out chevron arrows.
 Mounting: Wall, flag and ceiling.
 Attachments: Metal screws or bracket.
 Dimensions: 8" high x 15" wide. 1/4" to 3/8" depth.
 Features: Non-electrical, non-radioactive, low profile, explosion proof, low maintenance.
 Warranty: 25 years limited.
 Green Attributes: LEED credit compliant. No power usage. No radioactivity. High percentage of recycled material. No hazardous materials. Minimal maintenance. Long life. Recyclable.
 Listings & Codes: Underwriters Laboratories UL924 standard State of California Fire Marshal, IBC, NFPA and US Military code compliant.

Active Safety's Series 2002 photoluminescent exit signs are attractive and durable exit signs specified by leading architects and engineers for hotels, condos, schools, retail, offices, hospitals, parking garages, US military facilities and other locations conforming to the IBC, NFPA and UFC codes.

Non-electrical, non-radioactive and with a high content of recycled material, Active Safety Series 2002 photoluminescent exit signs are a favorite with LEED (EA1, MR4 or ID1) and other environmentally focused projects.

Photoluminescent operation means there are no electrical connections to engineer, procure and install. Once located adjacent to fluorescent lighting, Active Safety Series 2002 photoluminescent exit signs will operate for 25+ years with only minimal maintenance - no lamps, batteries or radioactive tubes to ever replace or dispose of.

ORDERING FORMAT

FAMILY	STYLE	FACES	MOUNTING	FACE PLATE COLOR	ARROWS*
2002	Blank – standard configuration BE16000 – polycarbonate vandal shield (non-UL)	S – single D – double	WM – wall mount CM – ceiling or flag mount PM – pendant mount	A – brushed aluminum B – black anodized W – White C – Custom	RA -Right LA - Left RLA - Both *Specify only with BE16000

SPECIFICATION DESCRIPTION

High [or Low Level] Exit Sign. UL 924 listed. Photoluminescent, non-electrical, non-radioactive, 75 foot visibility rating, 25+ year life. Recycled aluminum construction. Die-cut, stenciled faceplate with green symbols and 'pop-out' arrows. Single and double sided face configurations consistent with ceiling, flag or wall mount configurations specified on project drawings. Active Safety Series 2002.



Ceiling Mount

Flush Wall Mount



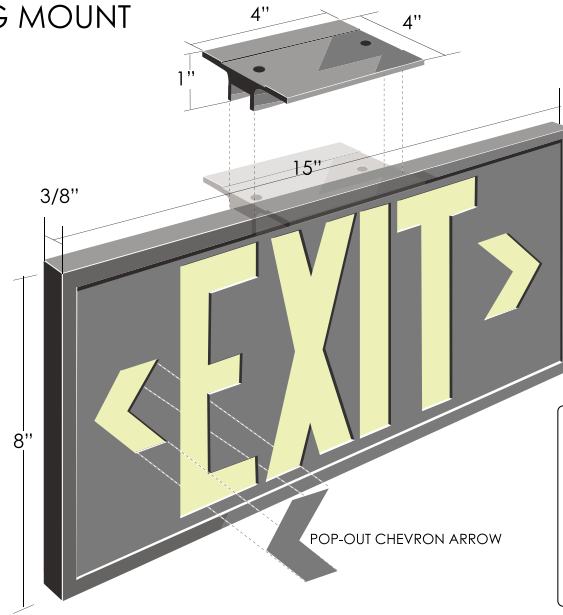
Face plate colors: Black, white & brushed aluminum



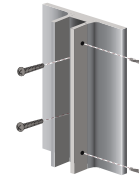
2002 Exit Sign

Product Dimensions and Installation Details

CEILING MOUNT



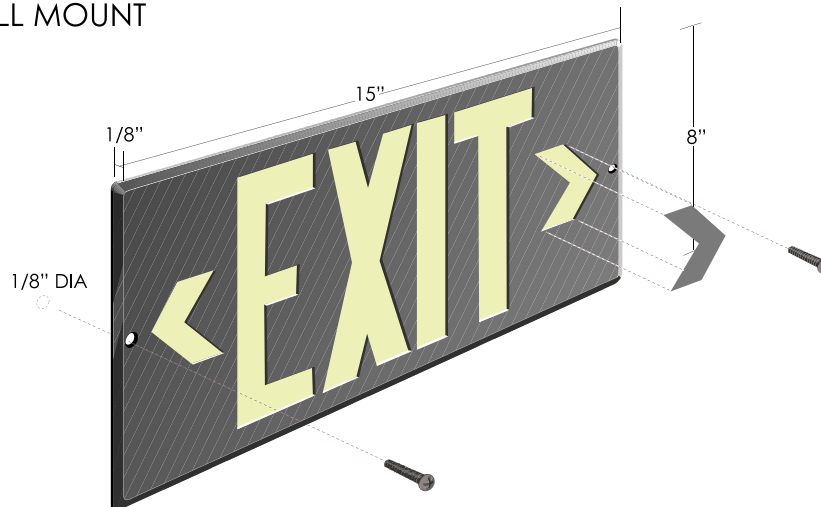
FLAG MOUNT



NOTES:

- 1- All dimensions in inches.
- 2- Screws not included to attach bracket to wall/ceiling substrate. Hole size = 1/8".
- 3- Wall mount attachment screws are included. 9/64" diameter x 1 1/2" long.

WALL MOUNT



Attributes

- Non-electrical and non-radioactive. Activated by nearby light.
- Use instead of LED or Tritium in high and low exit sign locations.
- Durable and attractive 'diecast' design lasts 25+ years. Several faceplate color options.
- Ceiling, wall and flag mounting options. 75 foot viewing distance.
- Easy, quick installation – no electrical circuitry.
- Minimal maintenance – no lamps or batteries to replace.
- "Green", sustainable construction and operation. A favorite with LEED projects.
- UL924 listed. Energy Star listed. IBC, NFPA and US Military compliant. Fire Marshal approved.